

User Manual for Apk “T2PLCalibrator” D23_D24

This user manual is to guide the personnel of Service Center to operate the Apk T2PLCalibrator for D23 and D24

T2PLCalibration is needed to perform calibration of hardware components including Accelerometer, Ambient Light Sensor, Proximity Sensor, and Touch Panel on D23 and D24 devices.

This manual will describe the operation steps of calibration in sequence of Accelerometer, Ambient Light Sensor, Proximity Sensor, and Touch Panel.

Contents

1	Operations.....	3
1.1	Install APK.....	3
1.2	Accelerometer	4
1.3	Light Sensor	6
1.4	Proximity Sensor	8
1.5	Touch Panel	13
1.6	Uninstall APK.	15

1 Operations

1.1 Install APK

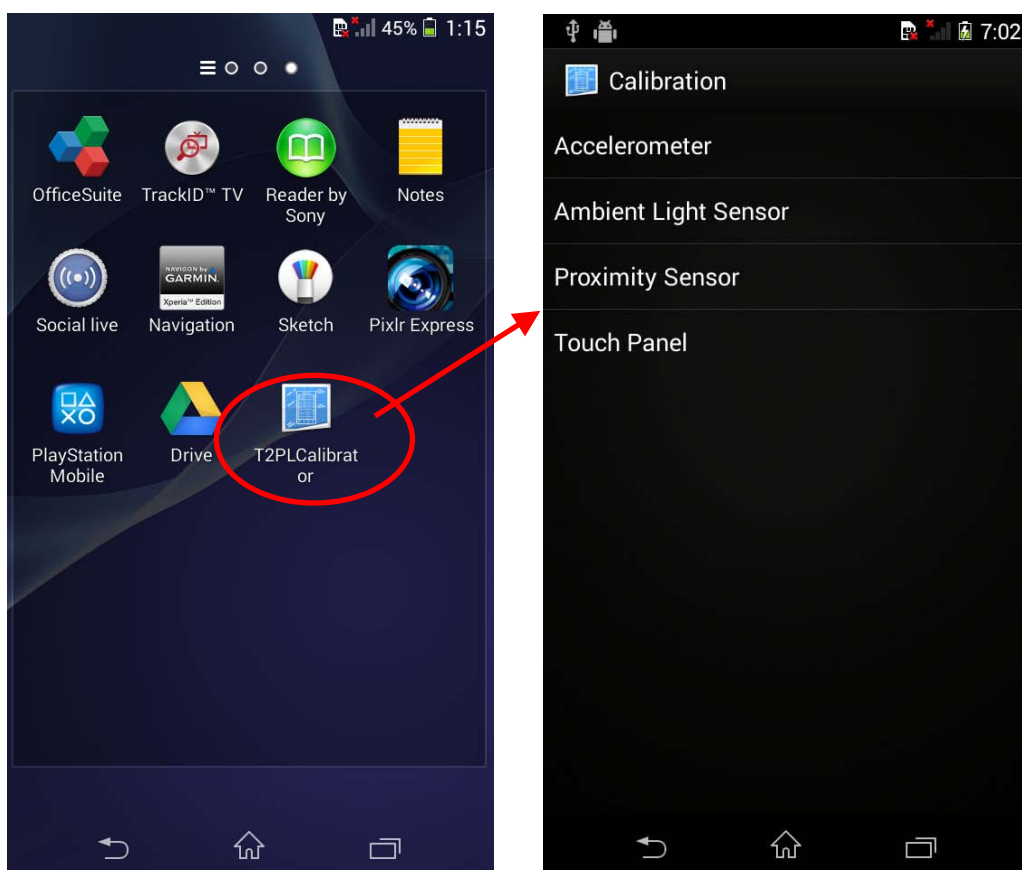
Follow APK installations guide for D23_D24

Important:

Install **D23 Calibration APK_JB** when Android software **4.3**

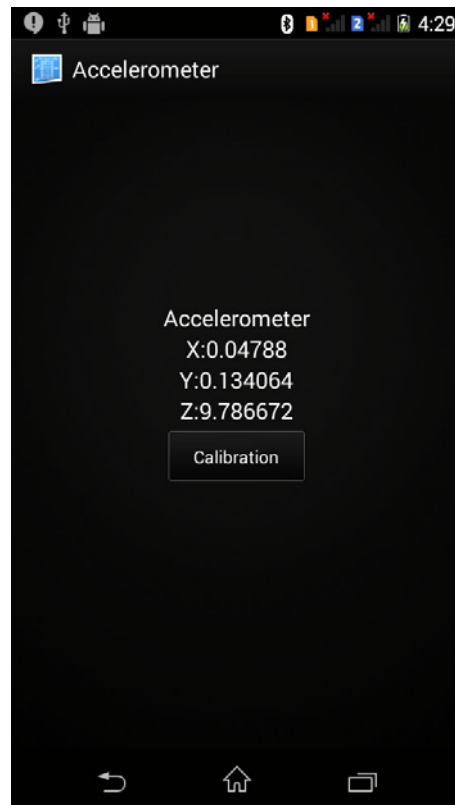
Install **D23_D24 Calibration APK_KK** when Android software **4.4**

Press T2PLCalibrator to enter Calibration menu.

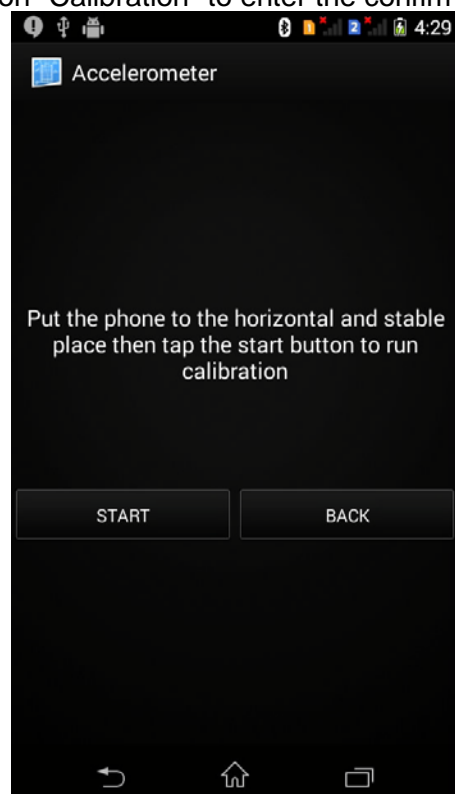


1.2 Accelerometer

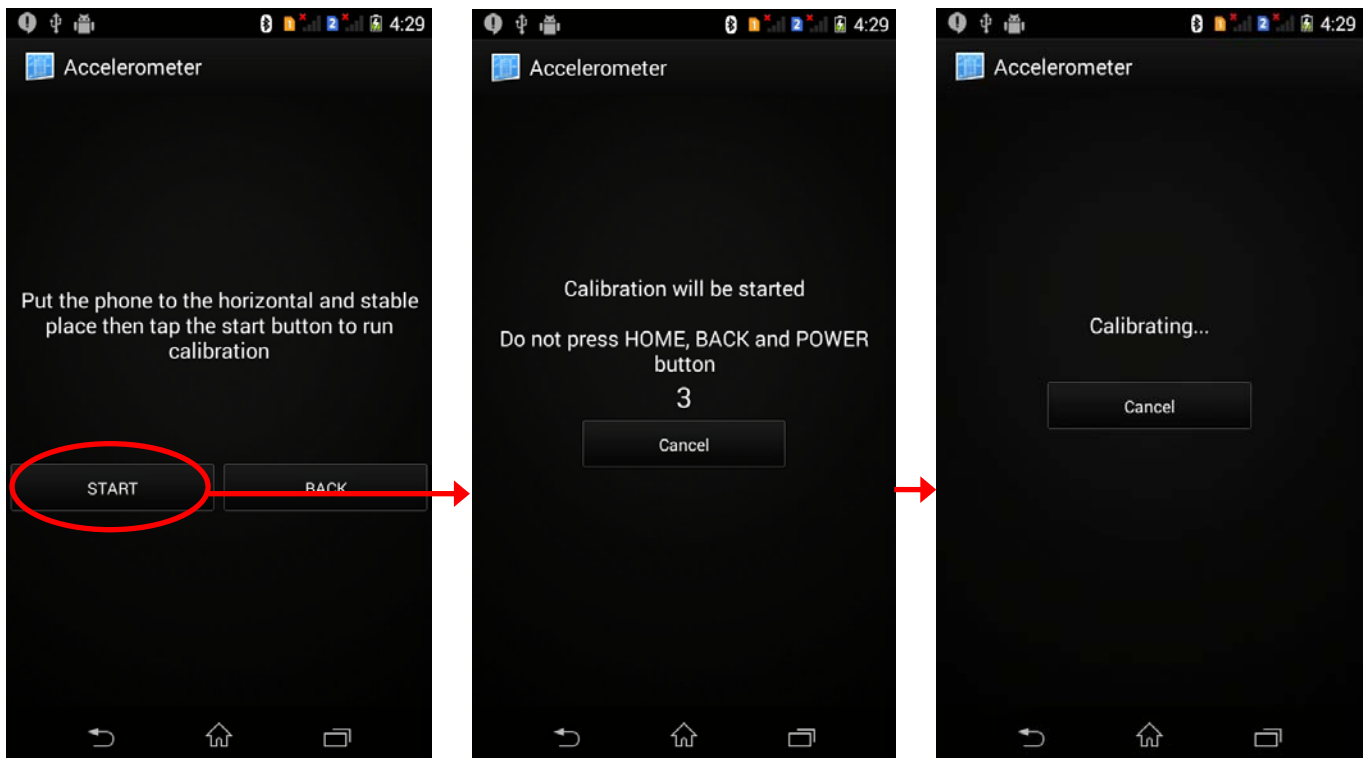
- (1) Select "Accelerometer" item in calibration main menu to enter the main page of Accelerometer calibration.



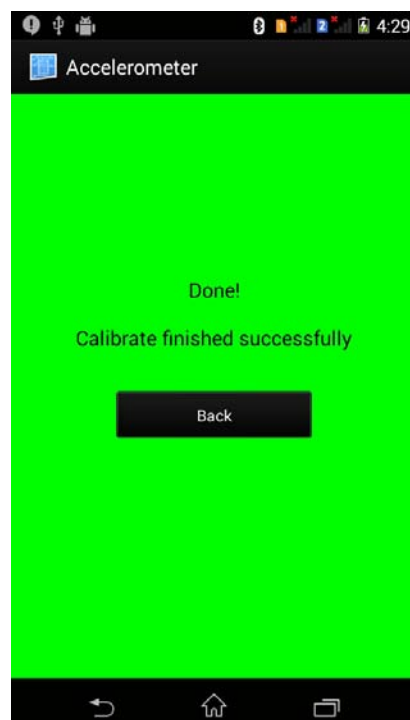
- (2) Press button "Calibration" to enter the confirmation page.



- (3) Please place the device on stable and horizontal flat plane (e.g. table).
- (4) Press button “Start” and the calibration process will start after 3 seconds countdown.
Please do not move the device during the calibration procedure.



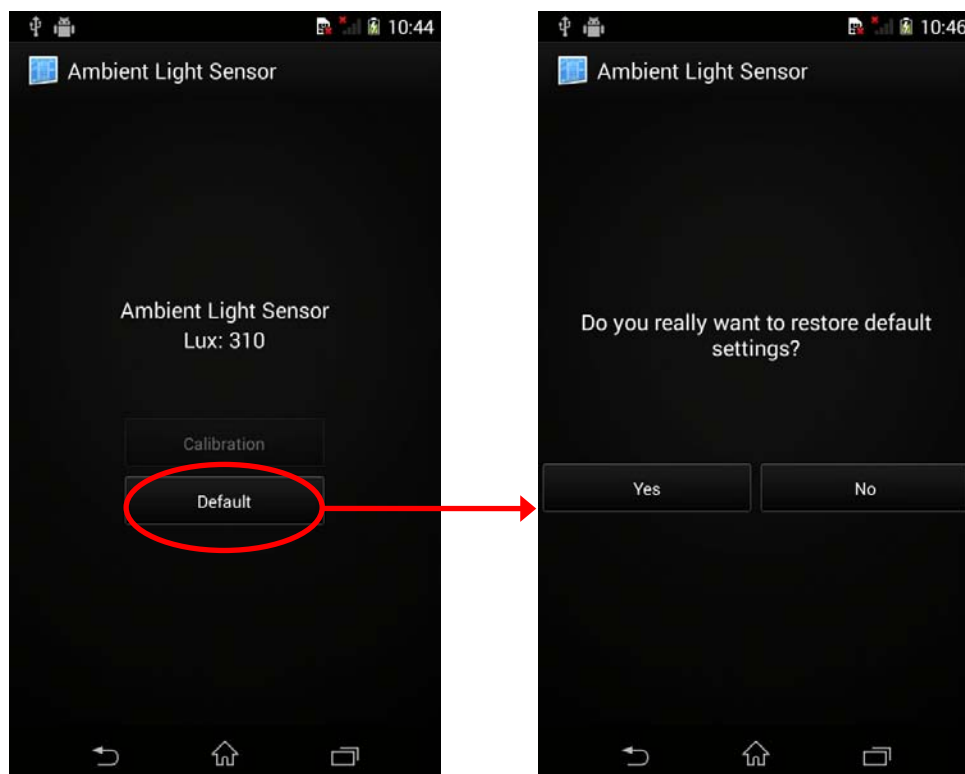
- (5) As calibration completed, the result screen will be presented. Press button “Back” to return to main screen.



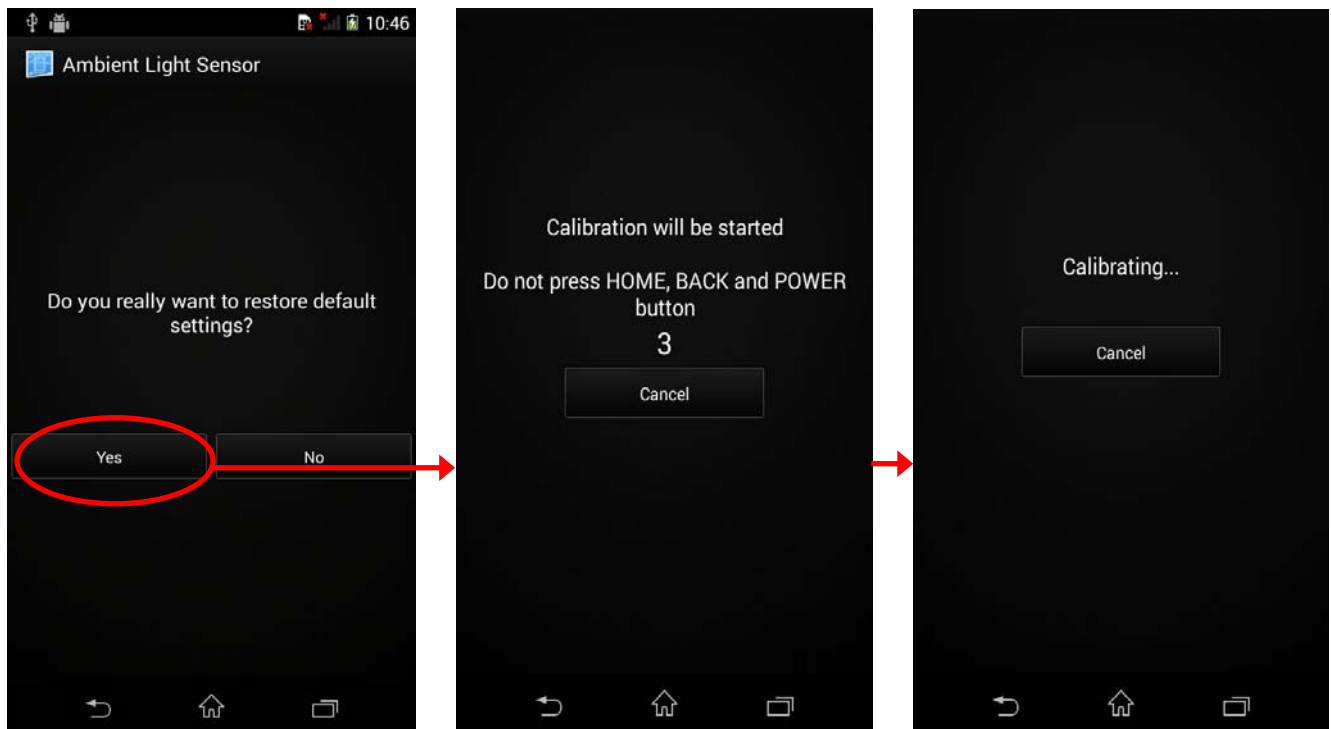
1.3 Light Sensor

- (1) Select "Ambient Light Sensor" item in calibration main menu to enter the main page of Light Sensor calibration.

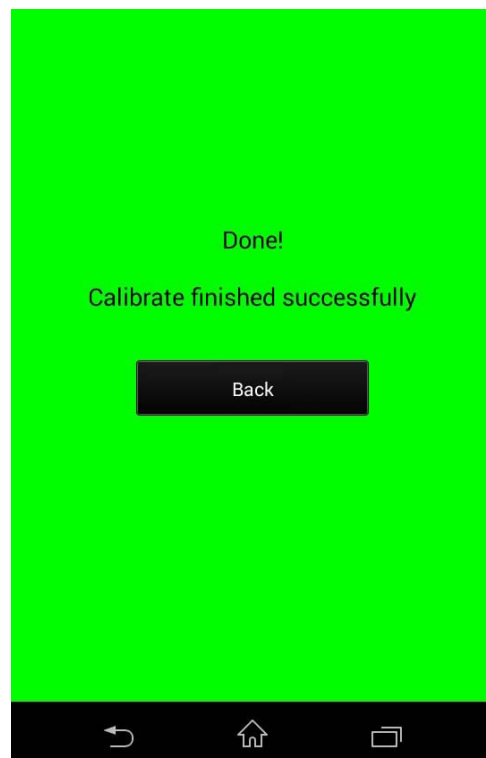
- (2) Press button "Default" to enter the confirmation page of calibration reset.



- (3) In the confirmation page, press button “Yes” and the calibration reset process will start after 3 seconds countdown



- (4) As calibration completed, the result screen will be presented. Press button “Back” to return to main screen.

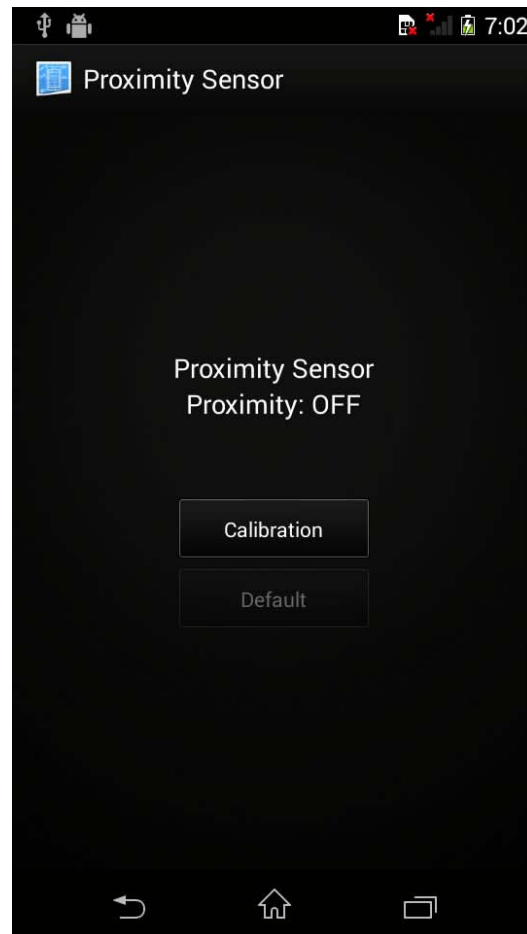


(3)

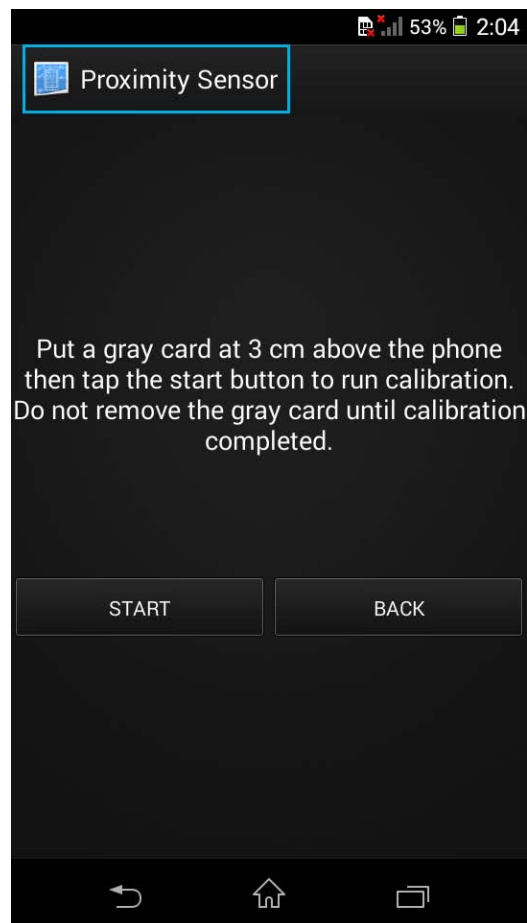
1.4 Proximity Sensor

The calibration procedure of Proximity Sensor includes two stages of Near and Far calibration.

- (1) Select “Proximity Sensor” item in calibration main menu to enter the page of Proximity Sensor calibration.



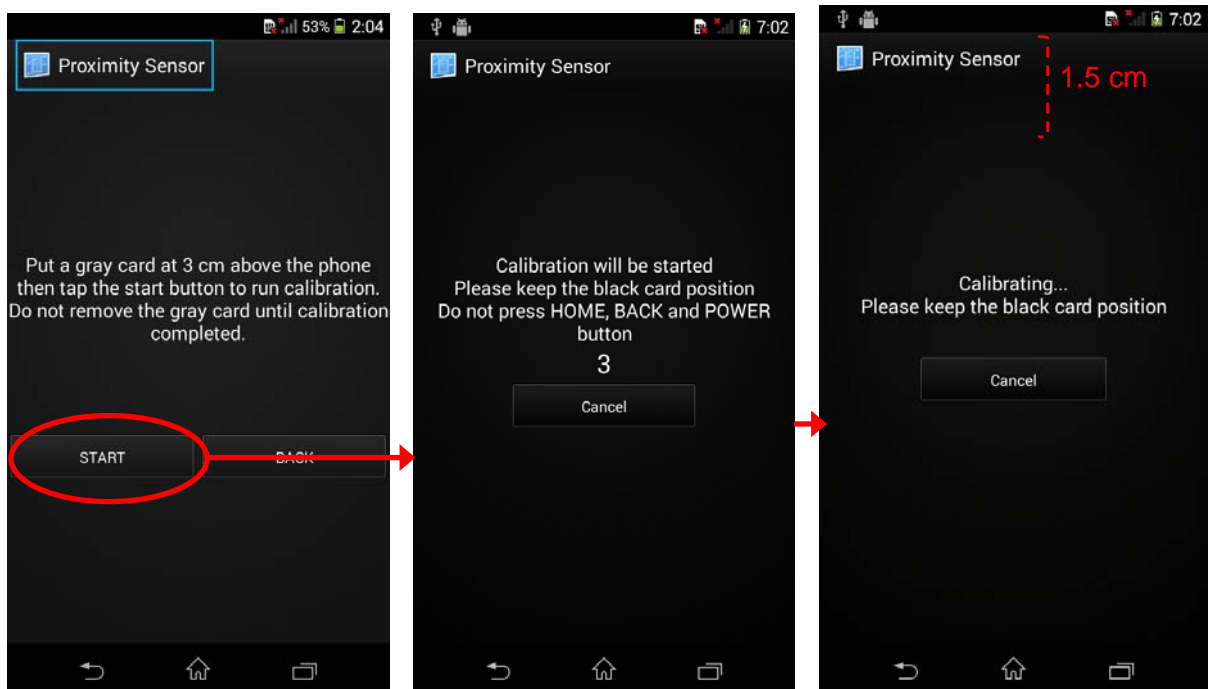
- (2) Press button "Calibration" to enter the confirmation page of the first stage calibration.



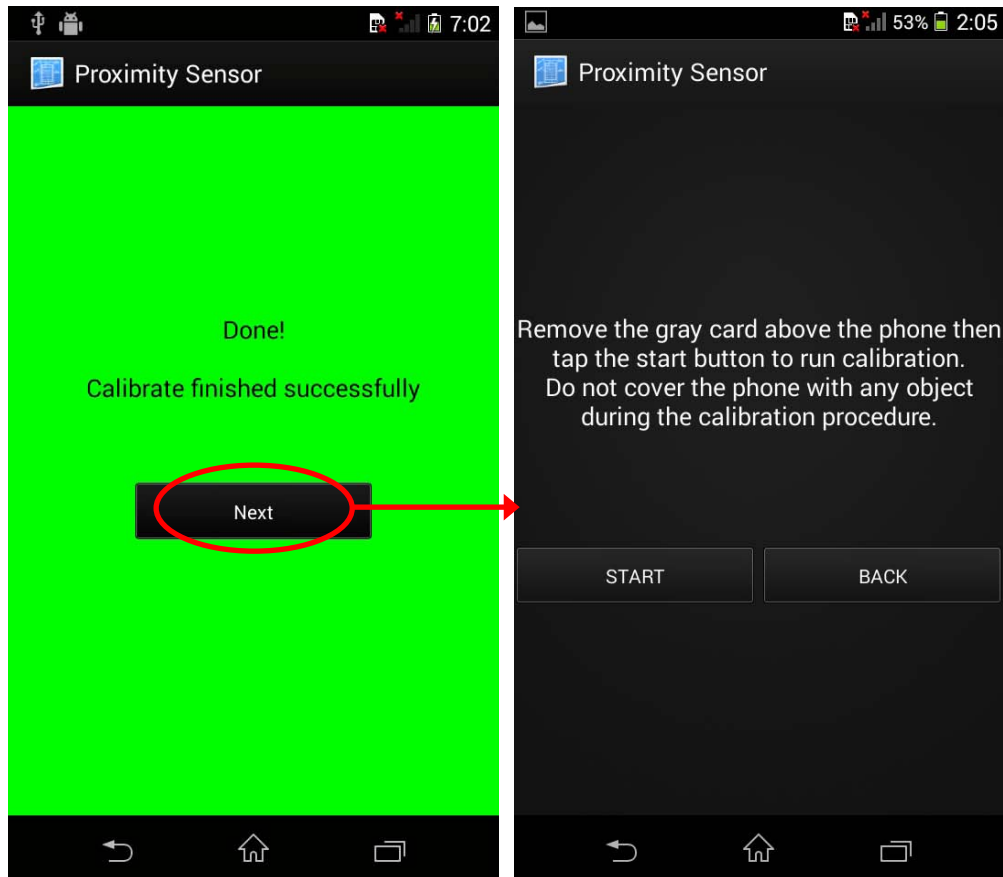
- (3) Please prepare a Proximity fixture C23/D23/D24 to cover the Proximity sensor by the distance of 3 cm above the device. (see below pictures for illustration)



- (4) Press button “Start” and the calibration process will start after 3 seconds countdown. Please keep the black card position and height during the calibration procedure.

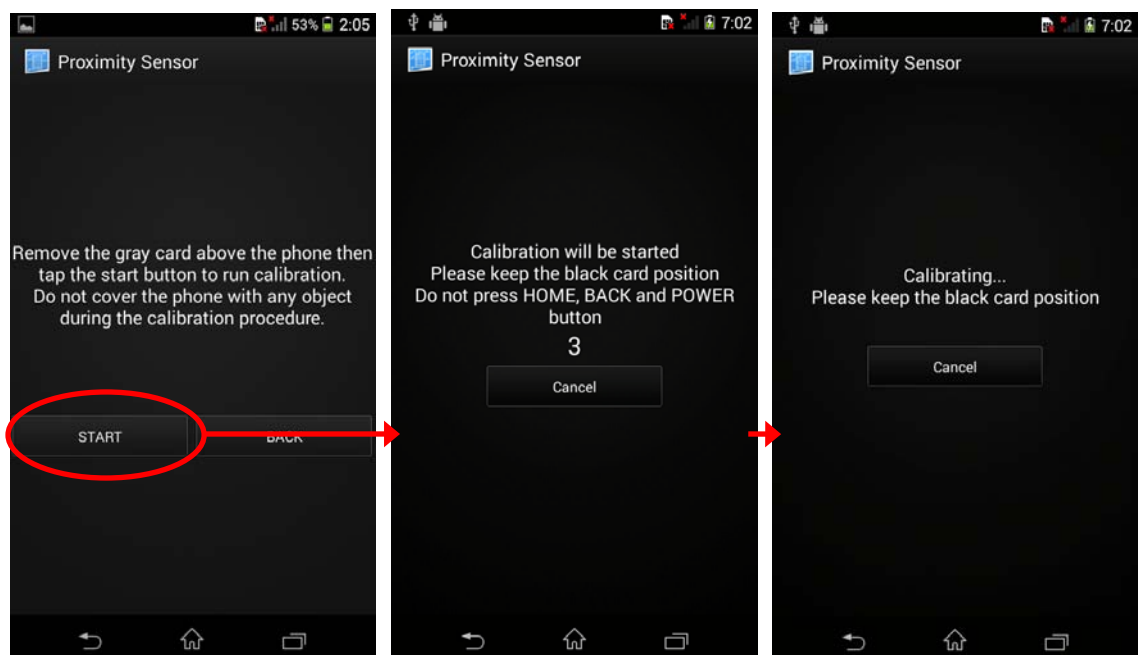


- (5) As calibration completed, the result screen will be presented. Press button “Next” to continue the next calibration stage.

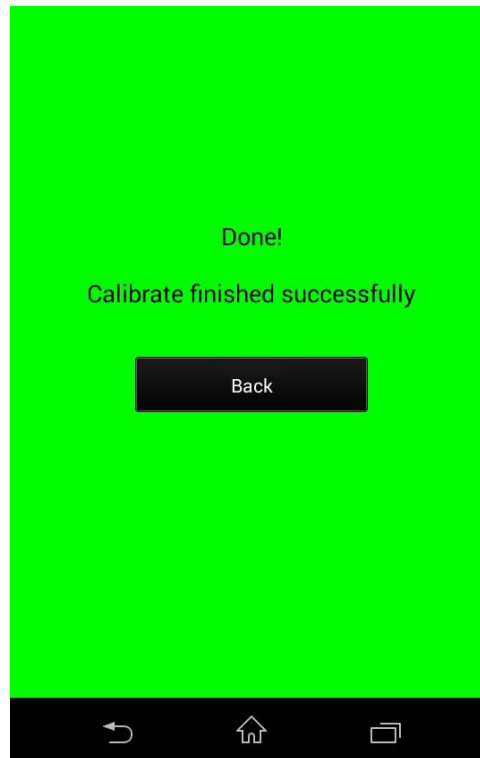


(6) Please remove phone from fixture.

(7) Press button "Start" and the calibration process will start after 3 seconds countdown. Please keep the black card position and height during the calibration procedure.

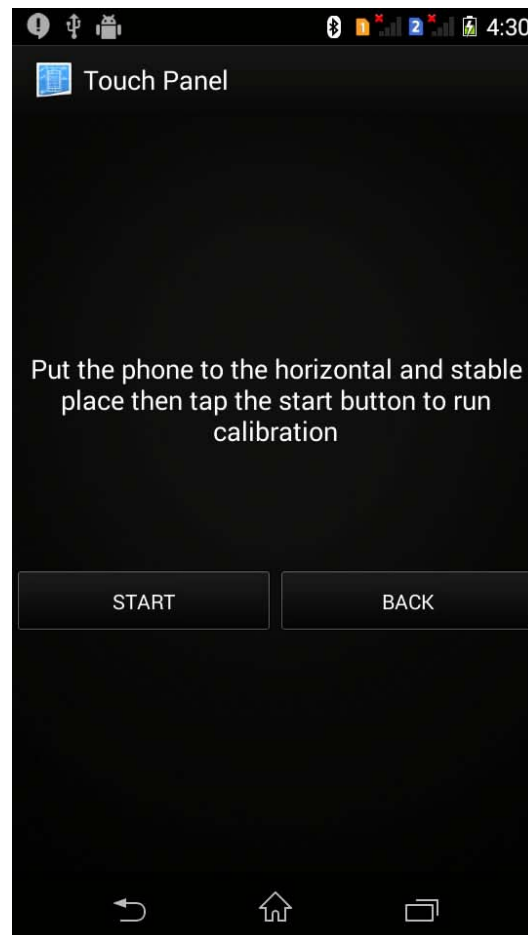


- (8) As calibration completed, the result screen will be presented. Press button “Back” to return to main page.

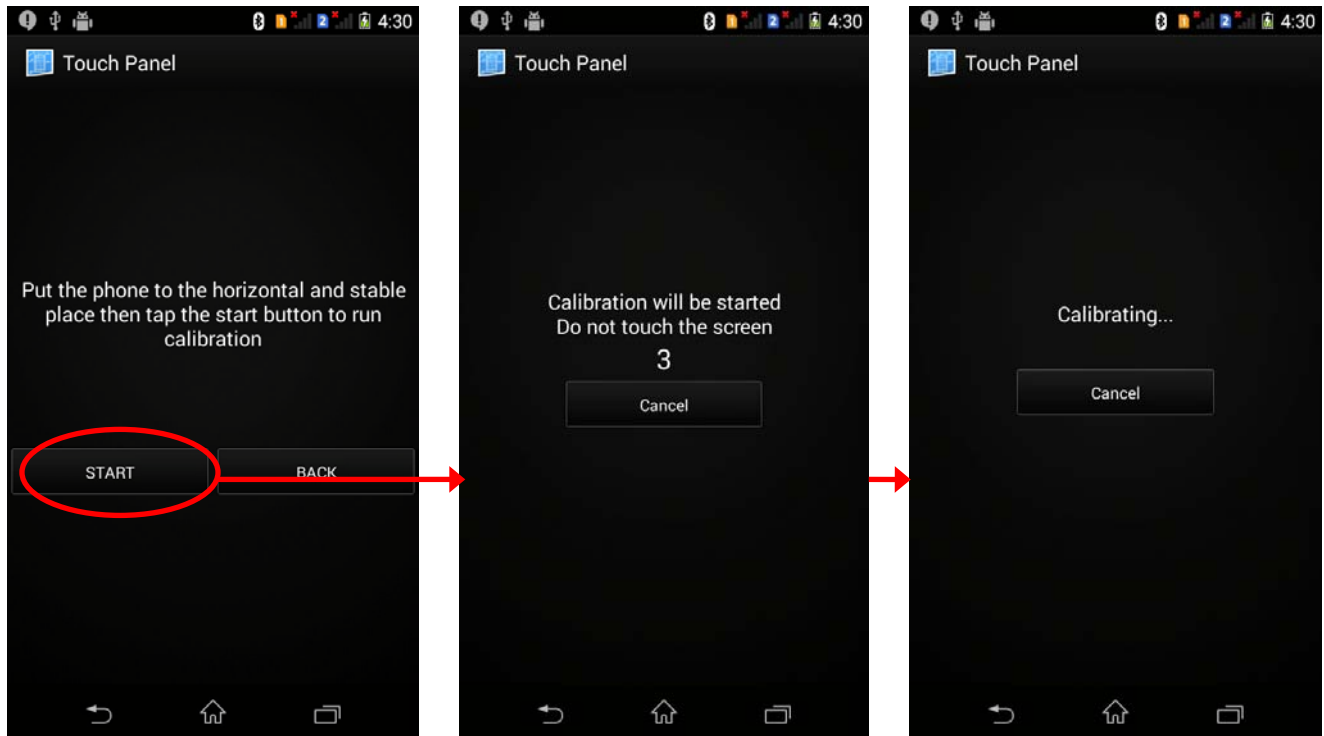


1.5 Touch Panel

- (1) Select “Touch Panel” item in calibration main menu to enter the confirmation page of Touch Panel calibration.



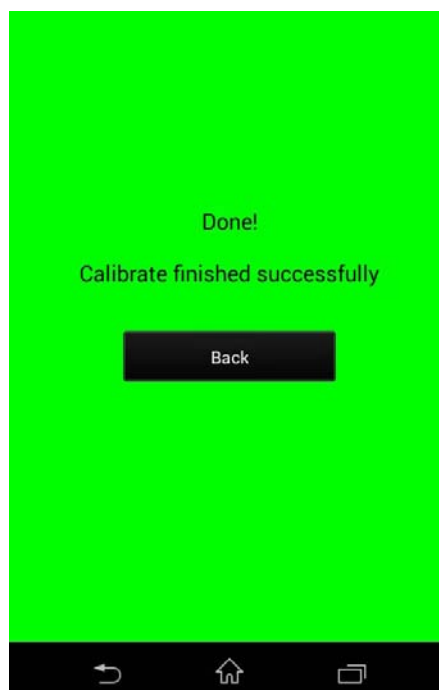
- (2) Please put the device at horizontal flat and stable place.
- (3) Press button “Start” and the calibration process will start after 3 seconds countdown. Please do not touch the screen during the calibration procedure.



* Before Touch Panel calibration accomplished, if the button cannot be pressed accurately caused by the sensitivity deviation of Touch Panel, please use side key to operate the calibration menu:

- Volume Up: Navigation Up
- Volume Down: Navigation Down
- Focus key: Select
- Camea key: Back

(4) As calibration completed, the result screen will be presented. Press button "Back" to return to main menu.



1.6 Uninstall APK.

After calibration uninstall T2PLCalibrator.

